

...the extra range trumpet!



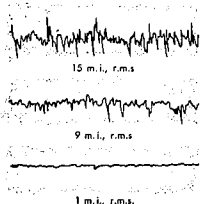
MARTIN
Committee Model
Bb TRUMPET

This is the trumpet that takes you up, UP into the range you've always thought beyond your reach. Sparkling clear highs become a part of your *normal* range — yes, even sustained passages! Your tone in the upper register is just as full and powerful as in the middle and lower registers.

As for flexibility, here again the Martin is outstanding. This *Committee Model* trumpet was designed by a group of America's finest players, working with the famous craftsmen of Martin to produce a trumpet of truly outstanding performance. No wonder more top stylists *depend on a Martin* than on any other trumpet! You owe it to yourself to try this remarkable trumpet at your earliest opportunity.

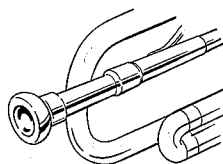


MODELS AND FINISHES: De Luxe Committee Model (illustrated) — Finished in lacquered brass with solid nickel silver trim, and in burnished gold. Committee Model — Finished in lacquered brass, silver with gold bell, and burnished gold. Both models available in either #2 (medium) bore or #3 (large) bore.



LIGHTNING SPEED of the valve action is yours right from the start. Martin trumpets and cornets *need no breaking in!* It's the result of *Micromagic* finishing on the pumps... a costly, new process that's exclusive with Martin.

Top graph shows surface of ground pump; center shows same pump after handlapping (the finishing method used by most other manufacturers). Lower graph shows the incomparable smoothness of finish obtained by Martin's exclusive *Micromagic* finishing.



EASY RESPONSE in all registers, and particularly when playing the top tones, results from scientific matching of all components...from mouthpiece to bell.



MAXIMUM RESONANCE is achieved by a new "supra-tempered" bell... which makes the De Luxe Committee Model tops for recording and radio work.